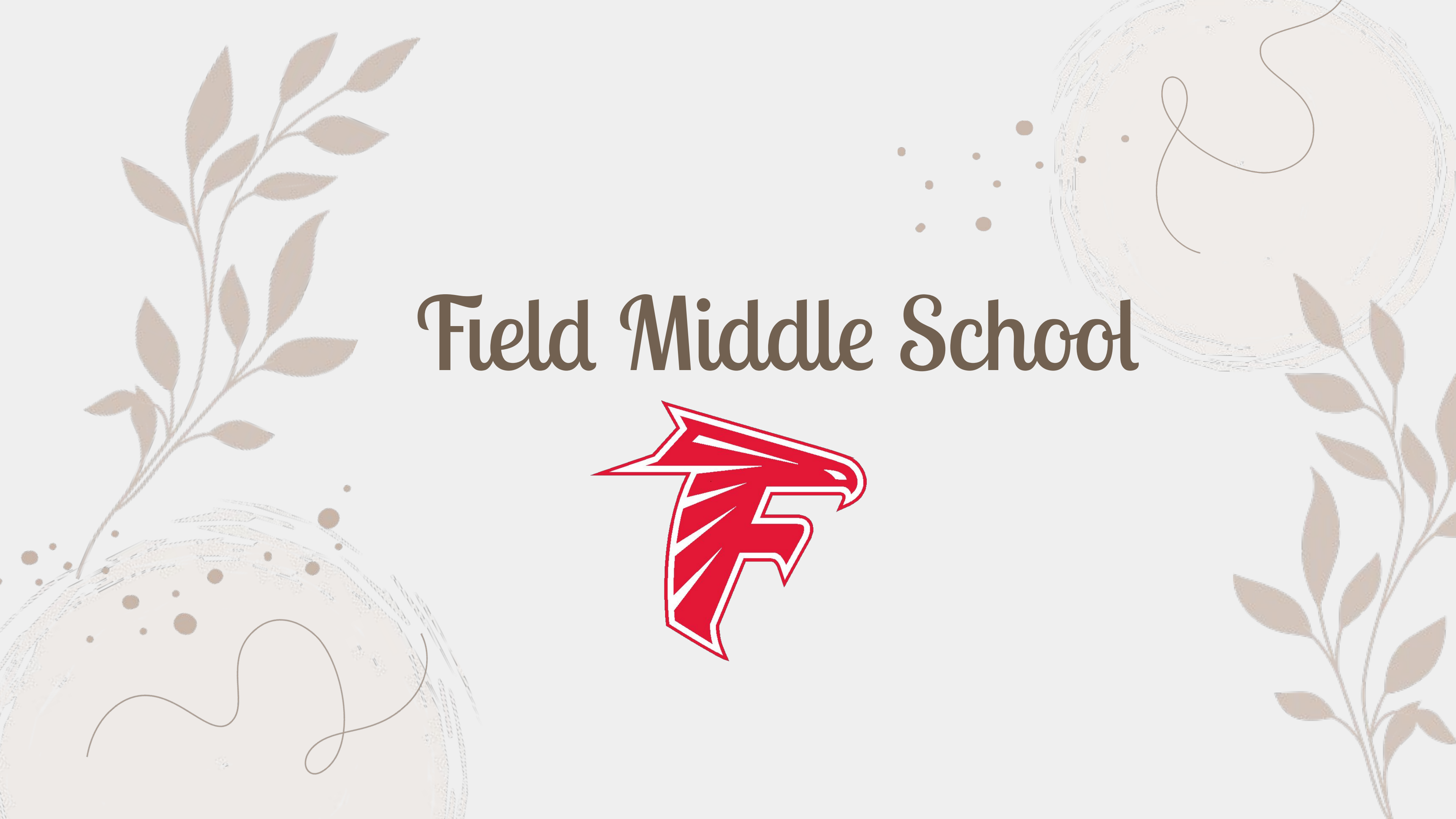


# Field Middle School



**Assistant Principal**



**Mrs. Mauger**

**Principal**



**Mrs. Kosewick**

**School Counselor**



**Mrs. Gaffke**

**Welcome to  
Field Middle School**

# Field Middle School

## We are a Team

Increase in

responsibility

accountability

independence

self-advocacy

maturity

FMS:

The center  
of it all!



# Our 6th Grade Team



English  
Language Arts



Math



Science and Social Studies



Intervention Specialists

# Our Encore Team



Physical Education



Band



Healthy Lifestyles



Technology



Vocal Music



# Communication



Weekly Newsletter- Monday afternoons



Middle School Website



Progressbook



Instagram Field\_MS



Email



Robocalls



Report Cards



Minor Discipline



Parent Teacher Conferences



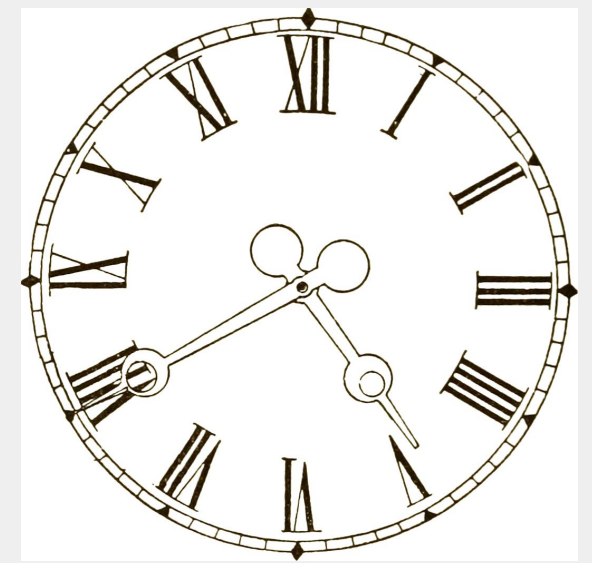
Telephone



Communication Guide



# Time For School



## School Begins

7:45 a.m.

- Car rider drop off begins at 7:15
- Enter Door 5 by stadium lot
- Buses unload at 7:45

## School Ends

2:45 p.m.

- Buses line up in front of FMS
- Pick-up 2:45-3:00 from Door 5 or 6

## Parents/Guardians of Car Riders

Enter school grounds via Saxe Rd.

Wait in pick up line on the stadium side of FMS

No need to sign your student in/out

# Arrival

7:15-7:45

## Where Do I Go?

- Car rider
- Enter through Door 5
- Cafeteria
- Bus rider
- Buses unload at 7:45

## Breakfast

- Purchase \$1.75
- Eat in the cafeteria
- 4 items including milk
- 
-



# Lunch

10:37-11:07

## Purchase

\$3.25

- Menu posted on website and in weekly newsletter
- Traditional Lunch
- Individual Items
- 4 digit code
- Account at [www.payforit.net](http://www.payforit.net)

## Pack

- Bring lunch from home
- Individual Items
- Microwaves

# What Does Gaffke Do?

Academic

College/Career



DEVELOPMENT

Social/Emotional/Personal



# How can you see Mrs. Gaffke?



Tell a:  
Teacher!  
Parent/guardian!  
Secretary (office)!



Email me!  
alexandrea.gaffke@  
fieldlocalschools.org



Stop by my  
office- come on  
in if my door is  
open!



Emergency?  
Tell an adult  
right away!



# FMS Schedule

## Fun Facts

- Period 1 is an extra 6 minutes for announcements and attendance
- Core classes: 86 minutes
- Encore classes: 41/42 minutes
- Lunch: 30 minutes
- Falcon Period: 30 minutes
- Hall passing: 2-3 minutes

## School Day

- The school day is made up of 9 periods:
- 2 periods: Language Arts
- 2 periods: Math
- 1 period: Science
- 1 period: Social Studies
- 1 period: Lunch
- 1 period: Encore
- 1 period: Encore



# 6<sup>th</sup> Grade Classes

## The Big Four CORE

Math

English Language Arts

Social Studies

Science

## The EnCOREs

Band

Choir

Art

Physical Education

Technology

Music

Healthy Lifestyle



# Encore Choices

Pick ONE!

General Music  
Choir  
Band

May get...

Healthy Lifestyle

Required!

Tech  
Art  
PE

# Reading the Schedule

Homeroom

Locker

Class Name

STUDENT SCHEDULE

STUDENT FEES

TEAM NAME :  
PROGRAM :

NUMBER	
HOMEROOM	
LOCKER	
BIRTHDATE	
PHONE	
COUNSELOR	
HOME SCHL	
GRADE	07
GENDER	F

NAME	
NUMBER	
GRADE	07

COURSE	SEC	COURSE NAME	TERM	MEETING TIME	CREDIT
7000	1	Lang Arts 7	AY	01,02 (204)	1.000
7002	4	Sci 7	AY	03 (302)	1.000
7003	4	Wld ST 7	AY	04 (112)	1.000
9902	3	Lunch 7	AY	05 (Cafe)	0.000
7001	6	Math 7	AY	06,07 (105)	1.000
4017	1	Phys ED 7	SEM1	08 (GYM)	0.500
4004	2	Con M 7	SEM2	08 (305)	1.000
4024	3	News	SEM1	09 (117)	0.500
0008	8	Art 7	MP3	09 (303)	0.250
0007	8	Health	MP4	09 (101)	0.250

COURSE FEE	AMOUNT

GENERAL FEES: Description(s): GR 7 SCHOOL FEE Amount(s): \$27.00  
 PROGRAM FEES:  
 MISC FEES:  
 MEMB FEES:

TOTAL COURSE FEES: \$0.00  
 TOTAL GENERAL FEES: \$27.00  
 TOTAL PROGRAM FEES: \$0.00  
 TOTAL MISC FEES: \$0.00  
 TOTAL MEMB FEES: \$0.00  
 PRIOR YEAR FEES: \$0.00  
 TOTAL FEES: \$27.00

LOCKER COMBINATION:

LOCKER ROOM:

Period

Locker

Class Length

# Scheduling



## Field Middle School

Course Selection Sheet for 2020-2021

Name \_\_\_\_\_ Grade \_\_\_\_\_

Students are automatically placed in required courses. Students select electives and return the form to the School Counselor.

### Grade 6 \*\*

#### Required:

(Y) English Language Arts  
(Y) Math  
(Y) Science  
(Y) Social Studies  
(9 wks) Keyboarding  
(9 wks) Art

### Grade 7

#### Required:

(Y) English Language Arts  
(Y) Math  
(Y) Science  
(Y) World Studies  
(9 wks) Art  
(9 wks) Computer Coding

### Grade 8

#### Required:

(Y) English Language Arts  
(Y) Math  
(Y) Science  
(Y) American Studies  
(9 wks) Art  
(9 wks) Computer Technology

Placement in elective courses is not guaranteed; elective courses are subject to change due to teacher availability/class size.

#### Electives:

##### Must Select ONE:

\_\_\_(S) Cont. Music 6  
\_\_\_(S) Choir  
\_\_\_(Y) Band  
\_\_\_(Y) Choir

#### Electives:

##### Must Select ONE:

\_\_\_(S) Choir  
\_\_\_(S) Cont. Music 7  
\_\_\_(Y) Band  
\_\_\_(Y) Choir  
\_\_\_(Sem 1) Intro to Band

#### Electives:

##### Must Select ONE:

\_\_\_(S) Cont. Music 8  
\_\_\_(S) Choir  
\_\_\_(Y) Choir  
\_\_\_(Y) Band  
\_\_\_(9wks) Art 8 Advanced

Select

Sign

\_\_\_(S) Healthy Lifestyles  
\_\_\_(S) Money Management

\_\_\_(S) Digital Media  
\_\_\_(S) Bucket Drumming

(Y) All Year Course

(S) Semester Course

Return to Mrs. Kuzas/Mrs. Gaffke on: \_\_\_\_\_

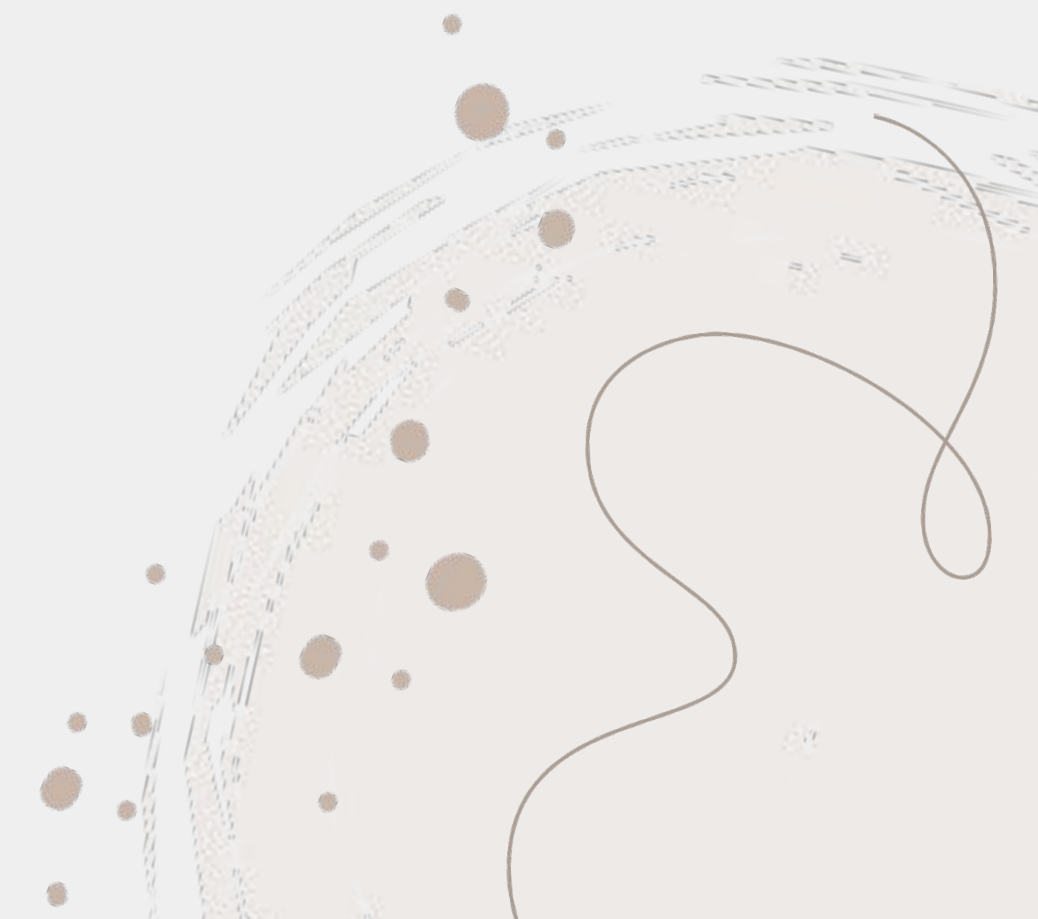
Parent/Guardian must approve of the schedule selections by signing below:

\_\_\_\_\_

Print Name

\_\_\_\_\_

Signature





# Honors ELA & Math



EVERY student is considered for placement in Honors courses EVERY year!

## Placement Criteria

Current and previous MAP scores  
Performance on state testing (OST)  
Iowa (7th grade Math)  
Classroom performance

Families will be notified by placement letter this spring. Honors ELA and Honors Math will automatically appear on schedules of students who have met the placement criteria.



# Lockers

## Expectations

- Each student is assigned a locker
- Students may NOT share lockers
- Combinations are printed on schedules
- Students will have time to learn combination
- Lockers must close to protect materials
- Teachers have keys if students need help
- Hang backpacks and jackets from hooks
- Backpacks and purses are kept in lockers during the day



# Lockers

## Tips and Tricks

- Locker shelves help with organization
- Put extra supplies on top shelf of locker
- You may decorate the inside of your locker with pictures or wrapping paper, but you may not use contact paper
- Do not put tape on the moving parts of the locker
- 3 locker stops per day: morning, before lunch, and at dismissal



# Cell Phones

Device must be silenced at all times

1

2

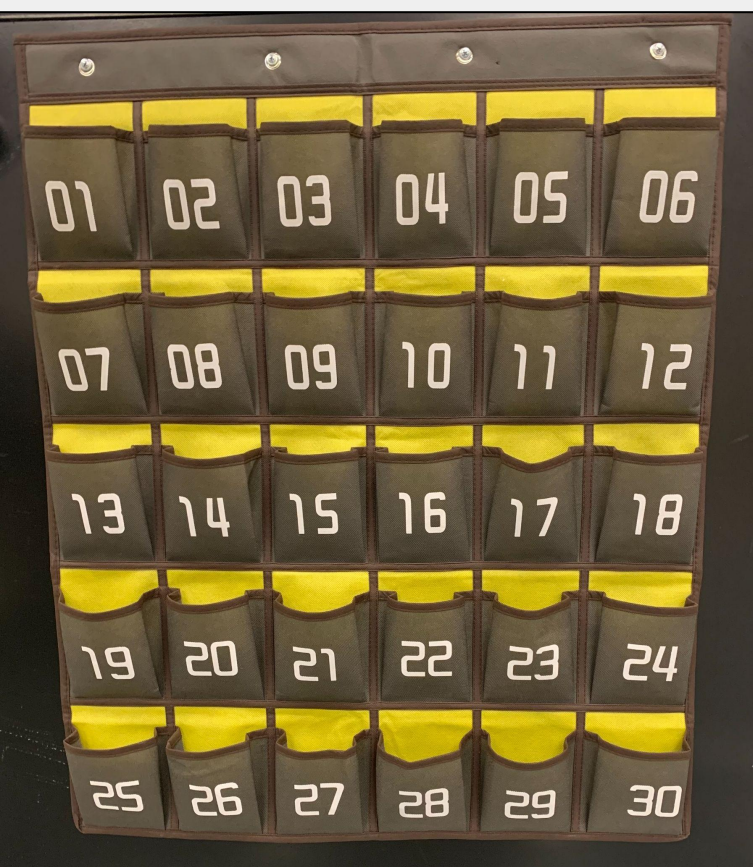
Use of cell phone to contact family members is prohibited

4

Upon entering class, students are expected to place their cell phones in the caddies located in each classroom

3

Cell phones are permitted at the discretion of the teacher



# Absent, Late Arrival, Early Dismissal



To report an absence, call the office prior to 8:30 a.m.



The day after the absence, email or send in a medical note with your child if he or she visited with a physician or dentist



A student who is late does not need an adult to sign him or her in



Late arrivals - arrival after 7:55 a.m.



An adult on FinalForms must sign student out in the office if he/she is getting dismissed early



Early dismissal – departure before 2:45 p.m.





Safe  
Outstanding  
Accountable  
Respectful

Our school uses

**Positive**

Behavioral Interventions and Supports (PBIS) to support your child's positive behavior.

## PBIS

- Creates a calm, positive environment at school
- Teaches each student positive behaviors for working well with others
- Reduces disruptive behaviors
  - Increases learning time, attendance, and achievement
- Makes our school a caring and safe place where students feel valued

# Get Involved

- Band
- Chess Club
- Choir
- Drama Club
- Girl Talk
- Girls Who Code
- Leo Club
- Library Aides
- Math 24
- National Junior Honor Society
- Student Council
- Solo/Ensemble Contest
- Spelling Bee
- Wonder Writers



# Athletics

## 7th and 8th Grade

- Basketball
- Cheerleading
- Cross Country
- Football
- Soccer
- Track
- Volleyball
- Wrestling





# Get Involved in the

## PTA FUNDRAISERS

- Cinderella Ball
- Popcorn Sale
- Box Tops
- Class T-Shirts

## BENEFITS

- Technology purchases
- Stage curtains
- Classroom requests
- PBIS Incentive Items



**BINGO-INFLATABLES-KARAOKE-FACE PAINTING  
HENNA-PHOTOBOOTH-MURALS-CORN HOLE  
COOKIE DECORATING STATION**

**FEB 14TH 2024  
5:30-8:00 PM**

**BE OUR VALENTINE AT  
FALCON FAMILY GAME  
NIGHT**

**FREE EVENT FOR THE  
WHOLE FAMIY!**

**CASH CONCESSION!**

**TRAVELIN TOM'S  
COFFEE TRUCK**



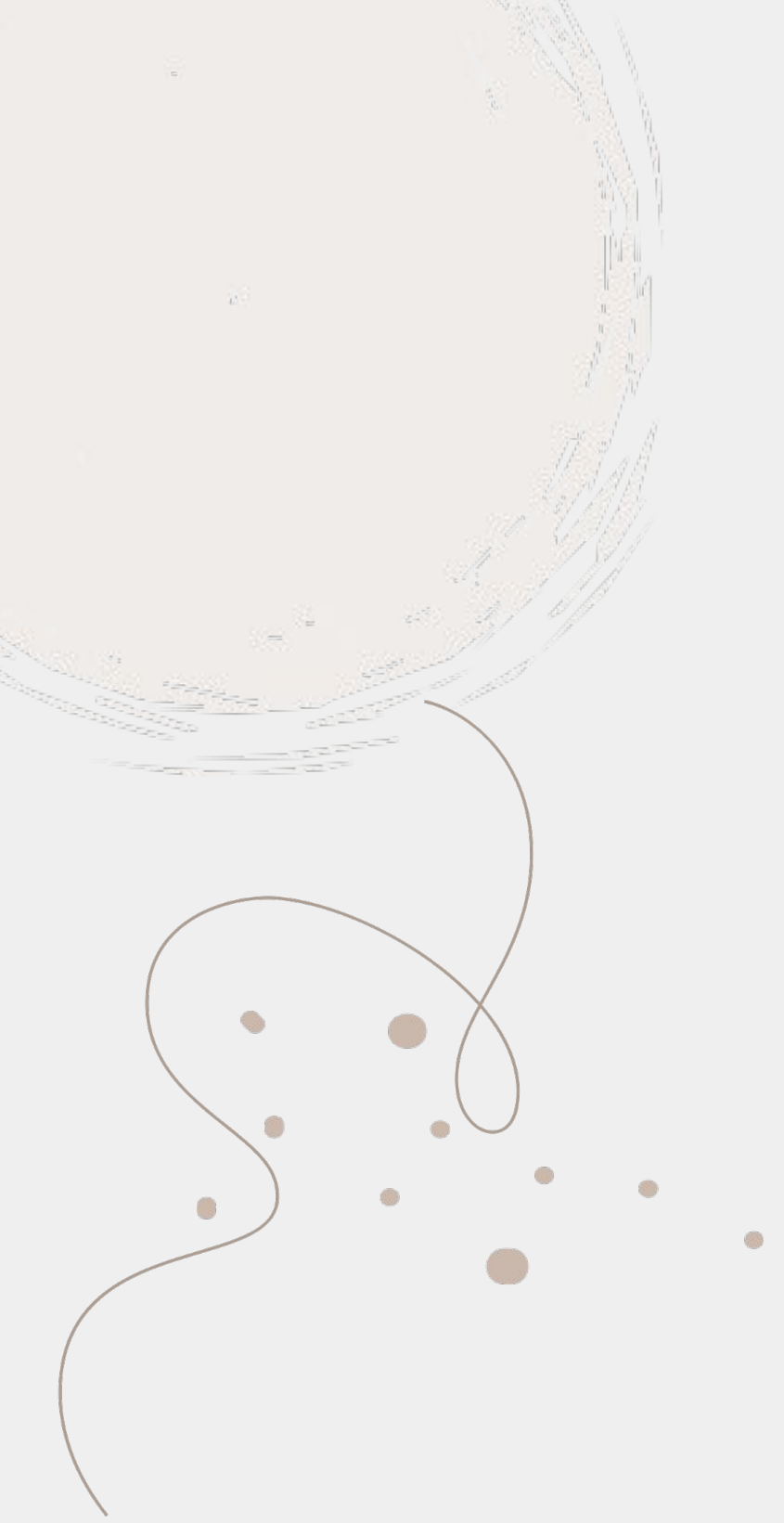
**LITTLE BLUE  
PASTRY WAGON**

**FIELD MIDDLE SCHOOL  
1379 Saxe Road, Mogadore, Ohio**

**4 SCHOOLS  
2 TOWNS  
1 HEART**



**THOUSANDS OF  
DOLLARS IN  
PRIZES!**



# Coming Soon!

## Principal's Letter

- Schedule pick up dates/times
- How to Pay Fees
- Summer Reading
- School Supply List
- Vaccination Records

## 6th Grade Jump Start

- Meet your teachers
- Walk your schedule with bells
- Practice your locker combination
- Experience a building tour
- Engage in a question and answer session with current students
- Learn where to go for dismissal (bus vs car rider)
- Enjoy fun activities



**Thank You**

**For Coming**



**Questions?**